



WWW.CHISON.COM



ECO 3 EXPERT VET

Black & White with Doppler,
Stunningly Good.

CE

CHISON
Value Beyond Imaging

Advanced Imaging Technologies

ECHO

- Advanced technologies:
 - i-Image(Intelligent image optimization)
 - THI(Tissue Harmonic Image)
 - SRA(Speckle Reduction Algorithm)
 - Compound imaging
- Full digital beam-former
- Trapezoid
- Automatic PW trace
- Chroma
- Full screen display mode
- AIO(Automatic image optimization)



Ergonomics

- Rotatable LED (0~30°) : tailor to different viewing angles
- Ultra-compact & Ultra-light
- Easy to carry
- Keyboard : For easy and quick access
- Dedicated cart TR9000
- Streamlined workflow
- Anti-water keyboard cover

ECO-friendly

- Less radiation
- Less power consumption
- Longer usage life:LED
- Longer battery standby time:2.5 hours

Economic

- The latest platform & more advanced chip-set:brings you better image quality and features at less cost in a more compact box
- Support PC printer(HP 1102,HP M251n): reduce investment & day to day paper cost
- 320G harddisk (option)
- Chargeable from your car



Ultra-compact



Carry case (BG-100)



Dual probe-holder



Chargeable from your car



Excellent PW

resolution and automatic PW trace measurement will greatly improve the diagnosis confidence by delivering both qualitative & quantitative results.

Streamlined workflow, Easy diagnosis !

ONLY **6** STEPS!!



1. ONE KEY to selected the desired application with automatic preset



2. ONE KEY to optimize the image automaticly.
AIO(Automatic image optimization)



3. ONE KEY to save still image and CINE loop



4. ONE KEY to measure



5. ONE KEY to make report



6. ONE KEY to print to PC or video printer (see page 4 option)



Canine Liver,B Mode



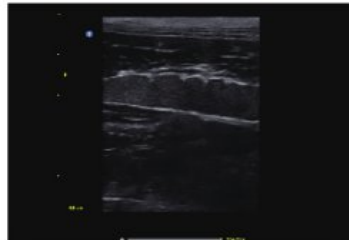
Canine Kidney,B Mode



Canine Fetus ,B Mode



Canine bladder,B Mode



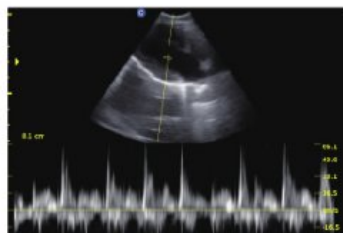
Canine Spleen,B Mode



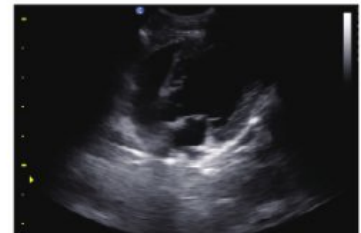
Bovine Reproduction,B Mode



Canine AC,B Mode



Canine Cardiac,PW Mode



Canine Cardiac,PW Mode

Specification

Applications	Large animal: Reproduction, Tendon.
	Small animal: Abdomen, Small parts, Basic cardiology.
Imaging technologies	i-Image, SRA, Compound imaging, THI
Display Modes	B, B/B, 4B, M, B/M, PW
Gray Scale	256 Levels
Scanning Depth	240mm Max (depend on the probe types)
Probe Frequency	2.5 MHz - 11.0 MHz (Depend on the probe)
Cine Loop	256 frames
Zoom	4 steps
Software Packages	Dedicated measurement package: General , OB/GYN, URO , Cardiac, vascular, small parts
Archives Management	Patient information management, images record, exam report.
Documentation	Full screen documentation, Hospital name, Patient name, Date/time
Power Supply	AC 100V-240V, 50Hz- 60Hz
Standard Configuration	Main unit , 2 probe connectors, 3 USB ports, VGA port , Video port , LAN port, Full Screen Display Mode, i-Image, Chroma , SRA, Compound imaging, THI, 8G memory card, PW Mode, Built-in Battery (BT-2500)
Option	DICOM 3.0, Anti-Water keyboard cover, Carry Case (BG-100) , Cart TR-9000 Support PC Printer* (HP P2055D / HP 1102 / HP M251n) , Video Printer (Sony UPD711MD)



2.5MHz-5.0MHz Convex
C3-A



5.3MHz-10.0MHz Linear
L7M-A



5.3MHz-11.0MHz Linear
L7S-A



2.5MHz-5.0MHz Micro-Convex
MC3-A



4.0MHz-7.0MHz Micro-Convex
MCSV-A



4.5MHz-8.0MHz Micro-Convex
MC6-A



5.3MHz-10.0 MHz Linear Rectal
L7V-A

CHISON MEDICAL IMAGING CO., LTD.

No. 9 Xin Hui Huan Road, New District, Wuxi, Jiang Su Province, China 214028
TEL: 0086-510-85310593 / 85310937 **FAX:** 0086-510-85310726 **EMAIL:** export@chison.com.cn



We reserve the right to make changes to this catalogue without prior notice. Please contact us or your local dealer for the latest information.

* Please refer to the user manual for details

ECO3 EXPERT VET-150216