

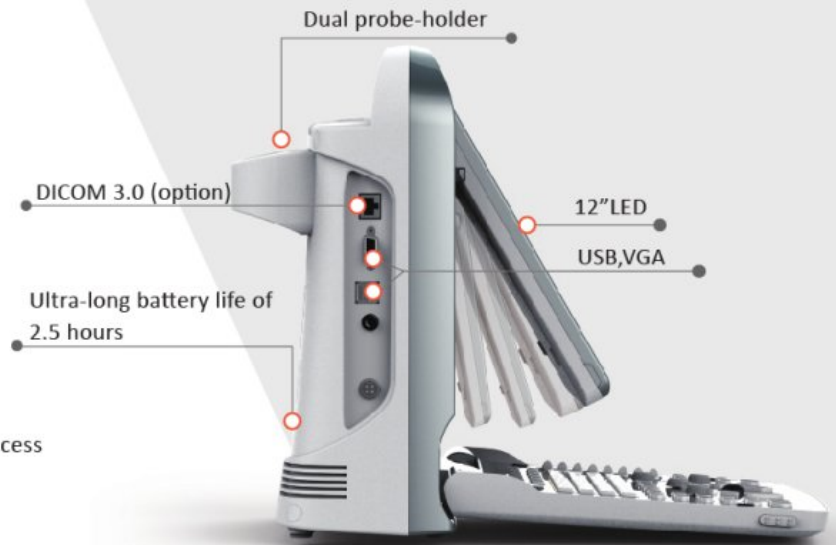
Ultra-compact, easy to carry with your car

Eco-friendly

- Less radiation
- Lower power consumption
- Longer life: LED

Ergonomic

- Rotatable LED monitor (0~30°) : tailor to different viewing angles
- Unique LED: reduce eye fatigue
- Keyboard design: for easy and quick access
- Easy to learn and use (6-one-key step)
- Anti-water keyboard cover (option)



Excellent

- Full digital beam-former
- Color doppler technology
- Double frame rate technology
- Color priority
- Color filter
- Applications
- Abdomen, OB&GYN, Urology, Vascular, Small Parts, Pediatrics, Basic Cardiology.
- Display modes: B, B/B, 4B, M, B/M, CFM, PW, Trapezoidal
- i-Image
- THI (Tissue harmonic imaging)
- SRA (Speckle reduction algorithm)
- Compound imaging

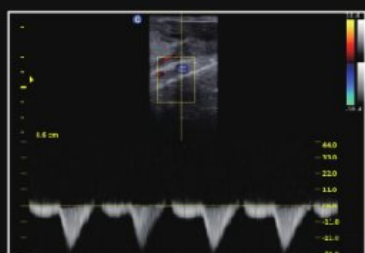




Efficient

- **Streamlined Workflow**

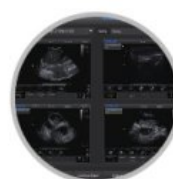
The multi-purpose user presets, comprehensive measurement & report system, built-in EasyView™ image archive system, quick image storage / retrieve / transfer, one-button direct print, make the complete workflow better than what you can dream of.



Various Measurements



Detailed Reports



EasyView™ Image Archive System

- **ONE KEY**



- **Support PC Printer**

