



www.chison.com.cn

CHISON Q5VET

Compact, Affordable Color Doppler

PW, CW, directional color power Doppler, THI

Trapezoid imaging and panoramic imaging, SRA, etc.

Large 15" LCD Display

2 probe connectors

800-458-8890
veteldiagnostics.com



CHISON Q5VET delivers superb image quality for multi-applications in small animal and large animal. With the advanced technologies of SRA,THI, it provides better contrast resolution, together with the professional VET probes and VET software, which greatly help the veterinarian to make an accurate diagnose.A work-flow oriented User Interface is built to allow user-friendly operation with minimum soft key entries.



Two Probe Connectors



USB, DICOM



15"LCD

Premium Images



Equine Tendon



Equine Spermatophore



Canine Kidney



Canine Bladder



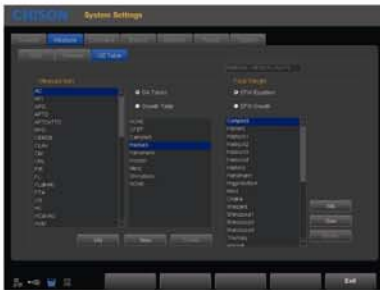
Feline Liver



Equine Testicles

Streamlined Workflow

The multi-purpose user presets, comprehensive measurement & report system, built-in EasyView image archive system, quick image storage/retrieve/transfer, one-button direct print, 4D direct burning to CD makes the complete workflow better than what you can dream of.



Various Measurements



Detailed Reports

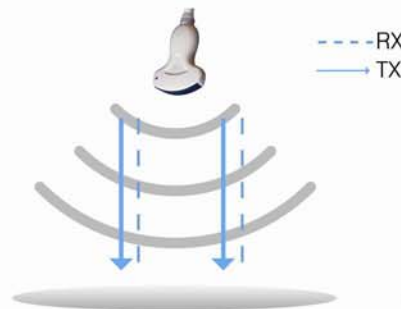


EasyView™ image archive system

Advanced technologies

Multi-Beam Former Technology

Enhance Frame rate
Improve image resolution



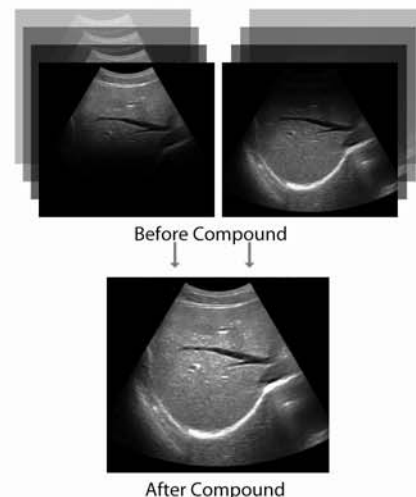
Traditional Single Beam Former



Q5 Multi-Beam Former

Compounding Technology

The traditional Compound imaging technologies improve the image quality, but lose the frame rate, which affect diagnosis convenience and efficiency. Our Compound imaging has integrated multiple key factors like frequency, focus and time, but will not sacrifice the frame rate.



Specifications

Imaging modes

- B, 2B, 4B, B/M, M
- CFM
- PW Mode
- Power Doppler / Directional PD
- Duplex
- Trapezoidal
- Chroma B/PW

Probes

- 6.0MHz Micro-Convex probe
- 5.0MHz Micro-Convex probe
- 7.5MHz Linear probe
- 3.5MHz Convex probe
- Wideband, Multi-frequency

Image processing technology

- THI on convex probe
- Speckle Reduction Algorithm (SRA)
- Compound technology
- i-Image™ : image optimization software

Standard configuration

Main unit, 15" LCD, 2 probe connectors,
Hard disk, 2 USB ports, Video out, TV out,
LAN port, VGA out

Options

- 6.0MHz Micro-Convex probe
- 5.0MHz Micro-Convex probe
- 7.5MHz Linear probe
- 3.5MHz Convex probe
- Video Printer: SONY UP897MD
- PC Printer (any type)
- DICOM 3.0
- i-Image™ : image optimization software
- Biopsy kit: for convex, linear, TV probe
- Foot-switch



6.0MHz Micro-Convex
D6C15L



5.0MHz Micro-Convex
D5C20L



7.5MHz Linear
D7L40L



3.5MHz Convex
D3C60L

CHISON MEDICAL IMAGING CO., LTD.

Factory Address:

NO.8, Xiang Nan Road, Shuo Fang, New District, Wuxi, Jiang Su Province, CHINA 214142

Sales & Service Contact Address:

No. 9 Xin Hui Huan Road, New District, Wuxi, Jiang Su Province, China 214028

TEL: 0086-510-85310593 / 85310937

FAX: 0086-510-85310726

EMAIL: export@chison.com.cn

www.chison.com.cn

We reserve the right to make changes to this catalogue without prior notice
Please contact our local dealer for the latest information.

800-458-8890
veteldiagnostics.com

EQ5VET 120507